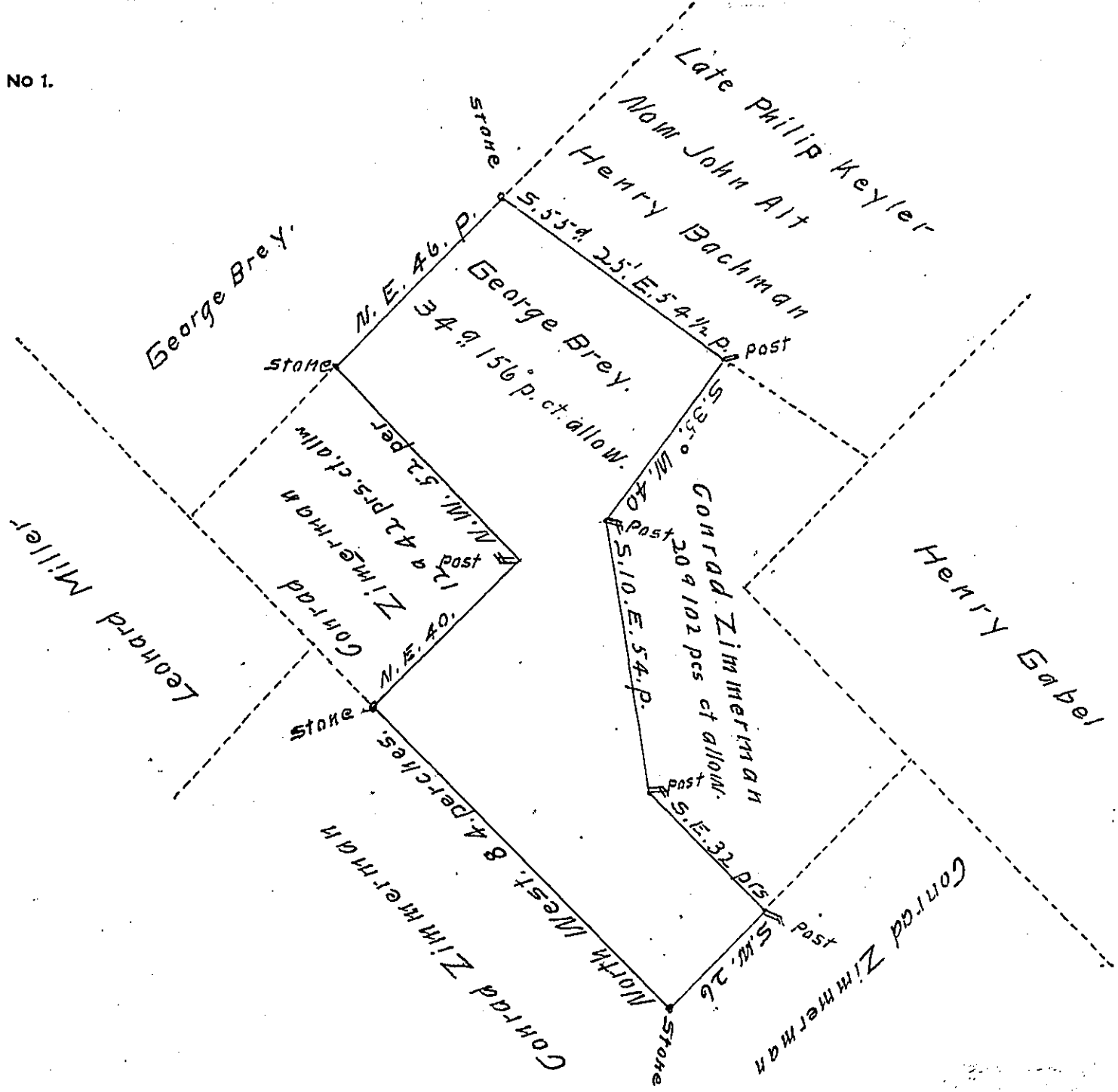


FORM NO 1.



A Draught of a Tract of Land Situate in Marlborough Township in the County of Philadelphia and Province of Pennsylvania. Being Part of a Tract late belonging to Philip Keyler, but now John Alt; (at first taken up by Michael Reiter) But this Part thereof was sold by the said John Alt and Henry Gabel to George Brey. Beginning at a Stone in the Line of the said George Breys other Land, Thence by the same North East 46 perches to a stone set for a Corner of the said John Alt's Land, Thence by the same South 55 degrees 25 minuts East 54 1/2 perches to a post Set for a Corner of Conrad Zimmermans Land, Thence by the same South 35° 09' West 40 perches to a Post and South 10° 09' E. 54. perches to a post and South East 32 perches to a post, Thence by the said Conrad Zimmermans other Land. South West 26 perches to a stone and North West 84 perches to a stone and North East 40 perches to a post, and North West 52 perches to the Place of Beginning, Containing Thirty four Acres and 156 Perches of Land together with the usual Allowance of Six per Cent for Roads.

Surveyed for the said George Brey on the 22<sup>d</sup> Day of November Anno. 1756. By David Shultze. IN TESTIMONY that the above is a copy of the original remaining on file in the Department of Internal Affairs of Pennsylvania, made conformably to an Act of Assembly approved the 16th day of February, 1833, I have hereunto set my Hand and caused the Seal of said Department to be affixed at Harrisburg, this 19<sup>th</sup> day of August 1907

*Henry Howells*  
Secretary of Internal Affairs.